



# Vehicle History Report

## VEHICLE DETAILS

**Chassis number <sup>1</sup>:** WVVZZZAUZEW078049

**Manufacture date:** 2014

**Make:** VOLKSWAGEN

**Model:** GOLF GTI

**Body:** ABA-AUCHH

**Grade:** BASE GRADE

**Engine:** CHH

**Drive:** 2WD

**Transmission:** AT

**Title information <sup>2</sup>:**



Deregistered  
Temporarily



**Accident / Repair:**



No problem



**Odometer rollback:**



No problem



**Manufacturer recall:**



No problem



**Safety grade <sup>3</sup>:**



★★★★



**Contamination risk:**



No problem



This vehicle does not qualify for Buyback Guarantee

Average Market Price



Unfortunately, this vehicle does not qualify for our Buyback Guarantee program.



¥0

[About Buyback Guarantee](#)

This CAR VX Vehicle History Report is based only on Information supplied to CAR VX, LTD and available as of 2024-03-28 19:39:41. Other information about this vehicle, including problems, may not have been reported to CAR VX, LTD . Use this report as one important tool, along with a vehicle inspection and test drive, to make a better decision about your next used car.

## ACCIDENT / REPAIR HISTORY

Problem type	Reported	Date reported	Data source	Details	Airbag
Collision	Not reported				
Malfunction	Not reported				
Theft	Not reported				
Fire damage	Not reported				
Water damage	Not reported				
Hail damage	Not reported				

## ODOMETER READINGS HISTORY

Date reported	Data source	Odometer reading (Km)
2021-01-26	MLIT	32500
2023-01-27	MLIT	40400
2024-03-23	ZIP Tokyo	44944


## USE HISTORY

<b>Use in the contaminated regions <sup>4</sup></b>	<b>Radioactive contamination test fail <sup>5</sup></b>	<b>Commercial use</b>
Not reported	Not reported	Not reported

## DETAILED HISTORY

Event date	Location	Odometer reading (Km)	Data source	Details
2014			VOLKSWAGEN	Manufactured
2014-01			MLIT	First registration
2021-01-26		32500	MLIT	Inspection
2023-01-27	Kawasaki	40400	MLIT	Inspection
2024-03-18	Kawasaki		MLIT	Last registration

## MANUFACTURER RECALL HISTORY

Date reported	Data source	Affected part	Details
 Not reported			

## VEHICLE ASSESSMENT <sup>6</sup>

### Overall Collision Safety Ratings

Driver's seat			Front passenger's seat		
Points	Evaluation	Goal average	Points	Evaluation	Goal average
9.86	★★★★	82%	9.43	★★★★	79%

\* In order to accurately differentiate between the evaluations of different vehicles, a standard is set based on current technology. Up to 6 points out of 12 is given level 1 and the rest of the range is divided up into equal parts, which are respectively assigned to level 2 (more than 6 points but 7.5 or less), level 3 (more than 7.5 points but 9 or less), level 4 (more than 9 points but 10.5 or less) or level 5 (more than 10.5 points).

### Braking performance tests <sup>7</sup>

Dry road



37.3 m

Wet road



39.9 m

## VEHICLE SPECIFICATION

1st gear ratio

2nd gear ratio

3rd gear ratio

4th gear ratio

5th gear ratio

6th gear ratio

Additional notes

Airbag position,  
capacity

Body rear overhang

Body type

HATCHBACK

<b>Chassis number embossing position</b>		<b>Classification code</b>	41
<b>Cylinders</b>	4	<b>Displacement</b>	1980
<b>Electric engine type</b>		<b>Electric engine maximum output</b>	
<b>Electric engine maximum torque</b>		<b>Electric engine power</b>	
<b>Engine maximum power</b>	220PS(162KW)/4500 ~ 6200RPM	<b>Engine maximum torque</b>	35.7KG· M(350N· M)/1500 ~ 4400RPM
<b>Engine model</b>	CHH	<b>Frame type</b>	
<b>Front shaft weight</b>	870	<b>Front shock absorber type</b>	
<b>Front stabilizer type</b>		<b>Front tires size</b>	225/45R17
<b>Front tread</b>	1535	<b>Fuel consumption</b>	
<b>Fuel tank equipment</b>	50	<b>Grade</b>	BASE GRADE
<b>Height</b>	145	<b>Length</b>	427
<b>Main brakes type</b>		<b>Make</b>	VOLKSWAGEN
<b>Maximum speed</b>		<b>Minimum ground clearance</b>	
<b>Minimum turning radius</b>	5.2	<b>Model</b>	GOLF GTI
<b>Model code</b>	ABA-AUCHH	<b>Mufflers number</b>	
<b>Rear shaft weight</b>	520	<b>Rear shock absorber type</b>	
<b>Rear stabilizer type</b>		<b>Rear tires size</b>	225/45R17
<b>Rear tread</b>	1510	<b>Reverse ratio</b>	
<b>Riding capacity</b>	5	<b>Side brakes type</b>	
<b>Specification code</b>	17547	<b>Stopping distance</b>	
<b>Transmission type</b>	AT	<b>Weight</b>	1390
<b>Wheel alignment</b>	2WD	<b>Wheelbase</b>	2635
<b>Width</b>	180		

Date: 2024-03-23, Auction: ZIP Tokyo, Lot #: 318

Date:	2024-03-23	Lot #:	318
Auction name:	ZIP Tokyo	Region:	Tokyo
Make:	VOLKSWAGEN	Model:	GOLF
Reg. year:	2014	Mileage (km):	44944
Displacement (cc):	1980	Transmission:	AT
Color:	WHITE	Model code:	AUCHH
Result:	sold	Auction grade:	4.5
Problem type:	No problem	Problem scale:	None
Contaminated:	No	Airbag:	OK

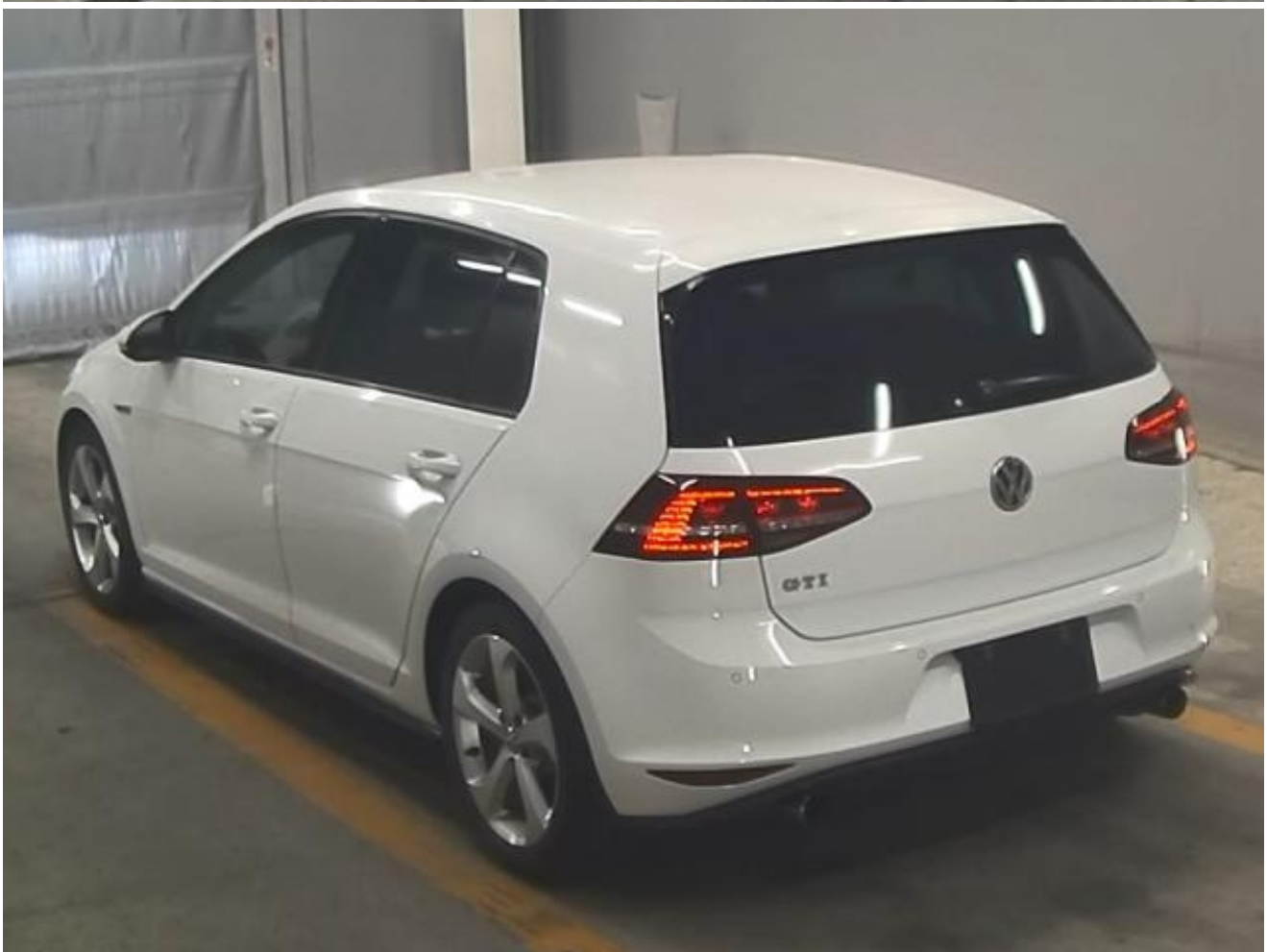
PHOTOS AND AUCTION SHEETS

03月23日		<b>ZIP オークション出品票</b>				評価点			
出品No.		年式		初年度登録		車名		グレード	
318		26年1月		vw ゴルフ GTI				4.5	
		型式		排気量		ドア		ハンドル	
		ABA-AUCHH		1980 cc		5		左	
車台No.		WVWZZZAUZEWO78049							
シリアルNo.									
車歴		自家用・レンタ・( )		コイル		SR		革	
車検		年月		インパネ		MT		AW ナビ TV	
走行		44,944 km		燃料		ガソリン・軽油・( )		Nox 適合・非適合	
色		ホワイト		Nox		適合・非適合		乗車定員 5名	
予備検		年月日(3・8)No.		スペアタイヤ		[有]		ジャッキ	
形状		キャンピング・放牧・事務室・( )		工具		[有]		AWロックキー	
名変期限		年月日迄		AWロックキー		[有]			
登録No.									
リサイクル料金		¥14,940		未					
(注意事項)									
長さ		477 cm		幅		180 cm		高さ	
検査記入		145 cm		(車検証上の寸法)					
外装		小キズ有・小キズ有・ホコリ有・ドアミラーA・フレ							
室内		コグ・A・ヨゴレ・キレ・ス		FW		トビ石・A・×要ス			
スタートレ									

(前)

(後)

※ご記入の際はボールペンで強くご記入下さい。







**<sup>1</sup> Chassis number** – a unique identification number of the vehicle in Japan (same as VIN in the USA or Europe)

**<sup>2</sup> Title information:**

Registered – qualified for driving in Japan

Deregistered Temporarily – not qualified for driving in Japan, usually a temporary title during the ownership change

Deregistered Completely – not qualified for driving in Japan, the vehicle is determined to be scrapped

Deregistered to Export – not qualified for driving in Japan, the vehicle is determined to be exported

**<sup>3</sup> Determining the overall collision safety performance evaluation** – For the driver's seat, the results of the full-wrap frontal collision test, offset frontal collision test, and side collision test are added together and evaluated to 6 different levels. For the Frontal passenger's seat, the results of the full-wrap frontal collision test and the side collision test (results for the driver's or the front passenger's seat are used) are added together and evaluated to 6 different levels.

Regular vehicle inspection – All vehicles in Japan must undergo regular vehicle inspections (shaken). New cars need to be tested after three years, and then vehicles must be tested every two years thereafter. A vehicle inspection (shaken) is compulsory for all vehicles with an engine size over 250cc. It ensures that all vehicles on the road are properly maintained and safe to drive. The test also checks that vehicles have not been illegally modified; if they are found to have been modified, they are not allowed on the road.

**<sup>4</sup> Use in the contaminated regions** – The Fukushima Daiichi nuclear disaster was a catastrophic failure at the Fukushima I Nuclear Power Plant on 11 March 2011, resulting in a meltdown of three of the plant's six nuclear reactors. As a result, some areas in the following prefectures were contaminated: Fukushima, Miyagi, Ibaraki, Tochigi.

**<sup>5</sup> Radioactive contamination test** – radioactive contamination inspection that was started in July 2011 as a preventive measure for exporting contaminated vehicles from Japan. The inspection is being conducted since in all sea ports of Japan under the supervision of The Japan Harbor Transportation Association (JHTA).

MLIT – Ministry of Land, Infrastructure, Transport and Tourism.

**<sup>6</sup> Japan New Car Assessment Program** – the Ministry of Land, Infrastructure, Transport and Tourism (MLIT) and the National Agency for Automotive Safety & Victims' Aid (NASVA) have taken measures for safety, one of which is to assess commercially available vehicles through a variety of safety performance tests and release the resulting information compiled into the "New Car Assessment Program". The objective of Japan New Car Assessment Program is to increase the use of safe automobiles by providing an environment in which users can easily select such vehicles. This also promotes the development of safer vehicles by automobile manufacturers. Neck injury protection for rear-end collision performance test, rear seat passenger's protection for frontal collision performance test, rear passenger's seat belt usability evaluation test and seat belt reminder for passengers evaluation test are started in FY2009.

**<sup>7</sup> Braking Performance Tests** – Braking performance is determined by the shortness of the distance in which a vehicle can stop and the stability of the vehicle at the time of braking. This test is performed under wet and dry road conditions for a vehicle which has both a driver and a front passenger. The distance it takes for the vehicle to stop and the stability of the vehicle at the time of braking is evaluated for when the vehicle is stopped abruptly while traveling at a speed of 100km/h. The stopping distance and vehicle speed have been measured by using GPS since FY2009.



CAR VX, LTD DEPENDS ON ITS SOURCES FOR THE ACCURACY AND RELIABILITY OF ITS INFORMATION. THEREFORE, NO RESPONSIBILITY IS ASSUMED BY CAR VX, LTD OR ITS AGENTS FOR ERRORS OR OMISSIONS IN THIS REPORT. CAR VX, LTD FURTHER EXPRESSLY DISCLAIMS ALL WARRANTIES, EXPRESS OR IMPLIED, INCLUDING ANY IMPLIED WARRANTIES OF MERCHANTABILITY OR FITNESS FOR A PARTICULAR PURPOSE.

© 2014-2024 Car VX Limited. All rights reserved.